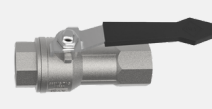
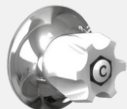


# How to find your isolator



## 1. Find + shut your isolator

An isolator shuts off the water supply to your unit. It is usually in a meter box, riser or wet area close to where the cold water supply first enters your property.

In buildings with central hot water, there will be a second isolator.

No luck? Service diagrams or your plumber can help.



## 2. Check your water is off

Shut the isolator, then run a cold tap in each wet area in your unit. If the flow slows, you have found an isolator and you can shut the tap. If the flow remains unchanged there may be a second isolator. Ideally one of them will isolate water to the whole unit.

If not, don't worry. We can help!



## 3. Check outdoor taps

It is useful to know whether any outdoor taps are plumbed as 'common water' or for the Lot.



## 4. Take a photo

Ideally, your plumber will want to see the type, location, accessibility, pipe and fittings at the isolator.



## 5. Are all units the same?

Sometimes isolators in a complex are not of a consistent type and location. Your plumber will need a complete picture of your setup.



## Thank you!

Thanks for helping expedite your quotes.

